

Installation Instruction

PCB Boards for NS-1000E, H-3000E and C-6100E



IMPORTANT INFORMATION FOR NS-1000E, H-3000E, AND C-6100E

PROBLEM:

The dispenser changes from probe mode into probeless mode by itself. This has occurred on less than 1% of the NS-1000E's we've shipped. There have been no failures reported on H-3000E or C-6100E, but since they have the NovRAM chip a failure is possible.

SOLUTION:

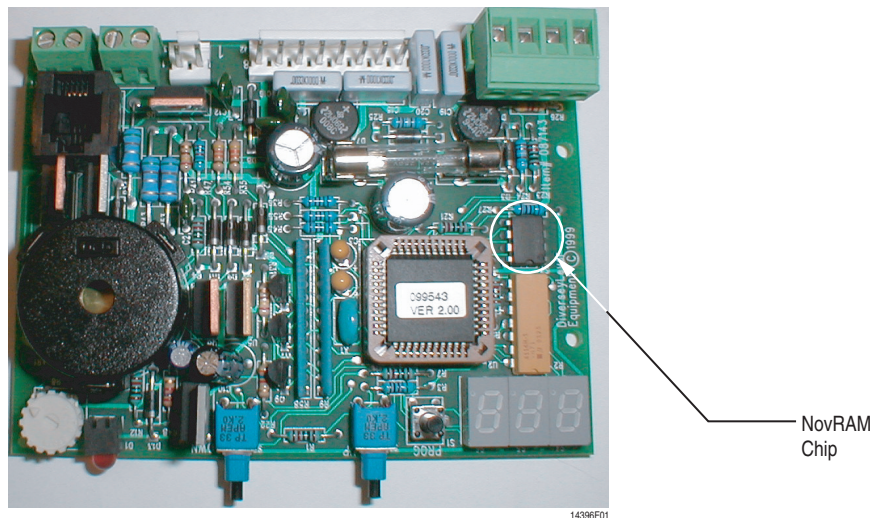
We found the cause to be a NovRAM chip on the PCB, which we've used for years, but very recently has been of diminished quality and fails to resist electrical noise.

Our long-term solution will be a redesign of the PCBs to eliminate the NovRAM chip, and this redesign is already in process.

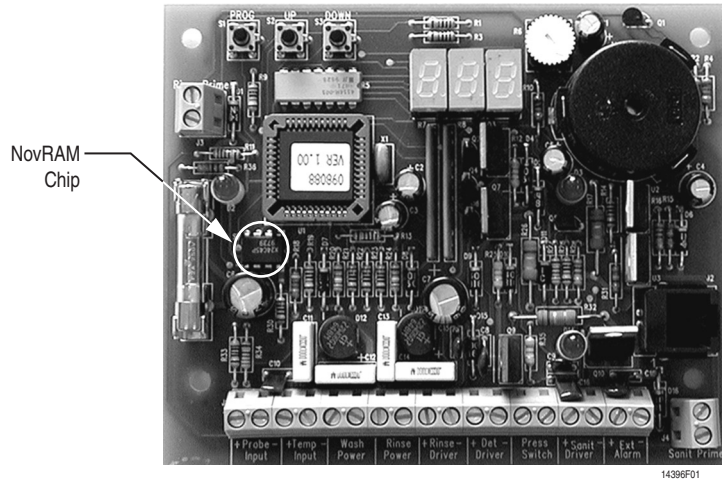
For units already shipped or in the field, this problem can usually be prevented by keeping the power wires away from the NovRAM chip, shown in the pictures below.

When installing, follow these steps:

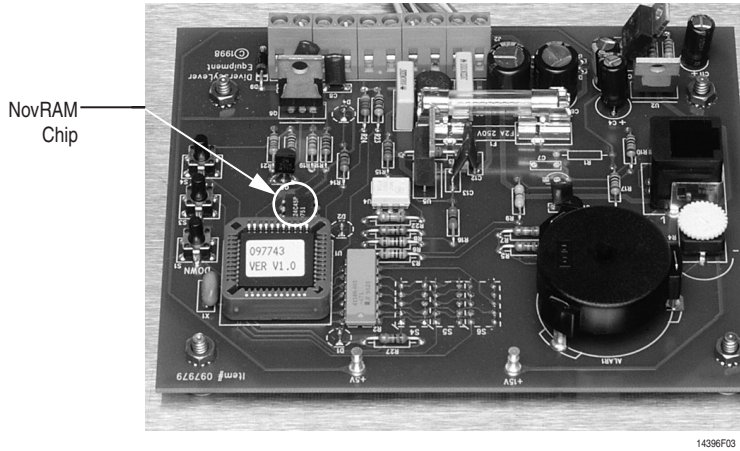
1. Power should be routed through the bottom of the dispenser directly to the terminal block.
2. Cut any excess power wire. Avoid coiling extra wire in the dispenser enclosure or having wire near the PCB. Such conditions can cause unwanted electrical noise and interfere with programmed settings.



NS-1000E PCB



H-3000E PCB



C-6100E PCB



Beta Technology, Inc
 2841 Mission Street
 Santa Cruz • CA
 U.S.A. • 95060

TEL • 831 • 426 • 0882
 TEL • 800 • 858 • 2382
 FAX • 831 • 423 • 4573
 FAX • 800 • 221 • 8416
 TEL • 800 • 215 • 6415 | Tech Support
 sales@beta-technology.com

Customer Service

Beta Technology, Inc
 4 Finway, Dallow Road
 Luton LU1 1TR
 United Kingdom

Freephone • 0800 • 052 • 4726
 Tel • +44(0) • 1582 • 528600
 Fax • +44(0) • 1582 • 528111
 Freephone • 0800 • 052 • 4726 | Tech Service
 VAT REG.NO.BG.354 - 09975 - 44
 europe.sales@beta-technology.com

Customer Service

Online Ordering: <http://www.beta-technology.com>