

# Fittings

# for Warewash Applications

Warewash Fittings are available for detergent, rinse and sanitizer applications. Beta Technology's variety of fittings make it possible to select the best fitting for the application. The rinse fittings all have check valves or NRVs so they can input into pressure. Two types of pipe connections are available: BSP and NPT.

## Rinse Fittings



### Straight Rinse Injector

**Materials:** Nylon 12 (body), Viton (valve)  
Polypropylene (tube connection)

**Pipe Connection:** 1/8" NPT

**Tube Connection:** 1/8"

**Applications:** Rinse or sanitizer with 1/8" tubing

**Code No. 051467**

### Straight Rinse Injector

**Material:** Stainless steel

**Pipe Connection:** 1/8" NPT

**Tube Connection:** 1/8"

**Applications:** Rinse with 1/8"  
tubing

**Code No. 099696**



### Straight Rinse Injector

**Materials:** Nylon 12 (body), Viton (valve)  
Polypropylene (tube connection)

**Pipe Connection:** 1/8" NPT

**Tube Connection:** 1/4" Polypropylene

**Applications:** Rinse or sanitizer with 1/4" tubing

**Code No. 051466**



## Rinse Fittings



### Y-Type Rinse Injector

**Materials:** Nylon 12 (body), Viton (valve) Polypropylene (tube connection)

**Pipe Connection:** 1/8" NPT

**Tube Connections:** 1/8" and 1/4"

**Applications:** Combination rinse or sanitizer injection with pressure switch

**Code No. 035876**

### Y-Type Rinse Injector

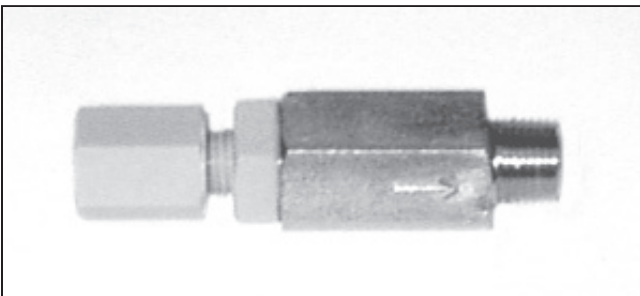
**Materials:** Nylon 12 (body), Viton (valve) Polypropylene (tube connection)

**Pipe Connection:** 1/8" NPT

**Tube Connections:** 1/4" (both)

**Applications:** Combination rinse or sanitizer with pressure switch

**Code No. 051465**



### NRV12 Rinse Injector Kits

**Material:** Stainless steel

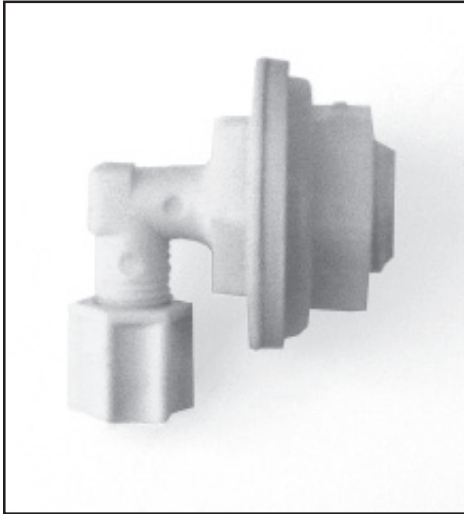
**Pipe Connection:** 1/8" BSP (British Std Pipe)

**Applications:** Rinse with metric tubing

**Code No. 065348** - 4mm tube connection

**Code No. 065360** - 6mm tube connection

## Detergent Bulkhead Fittings



### Single Wall Tank Liquid Detergent Fitting

**Material:** Polypropylene

**Bulkhead Hole:** 22mm, 7/8"

**Tube Connection:** 1/4"

**Fitting Angle:** 90°

**Code No. 022031**

### Double Wall Tank Liquid Detergent Fitting

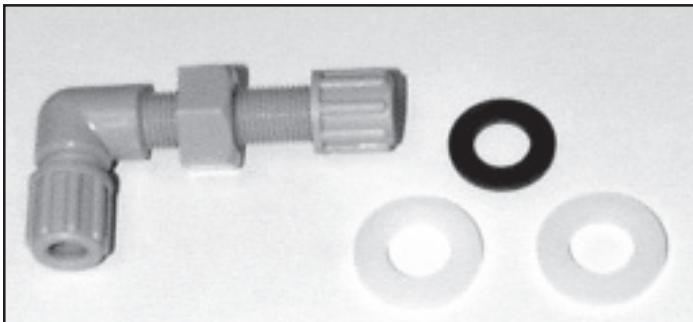
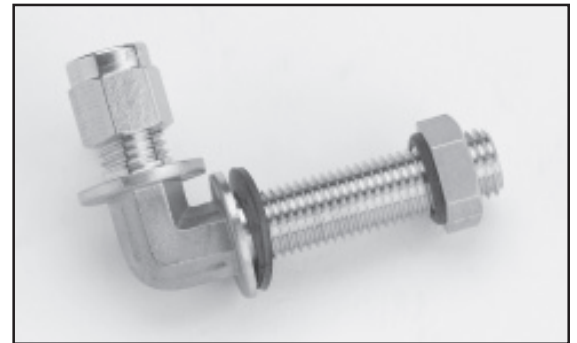
**Material:** 316 Stainless steel

**Bulkhead Hole:** 12mm, 7/8"

**Tube Connection:** 6mm OD x 4mm ID

**Fitting Angle:** 90°

**Code No. 067741**



### Double Wall Tank Liquid Detergent Fitting

**Material:** Polypropylene

**Bulkhead Hole:** 10 mm, 2/5"

**Tube Connection:** 6mm OD x 4mm ID

**Fitting Angle:** 90°

**Code No. 063927**

### Single Wall Tank Dry Detergent Fitting

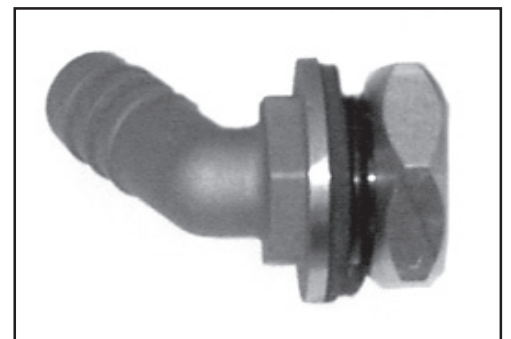
**Material:** 316 Stainless steel

**Bulkhead Hole:** 22 mm, 7/8"

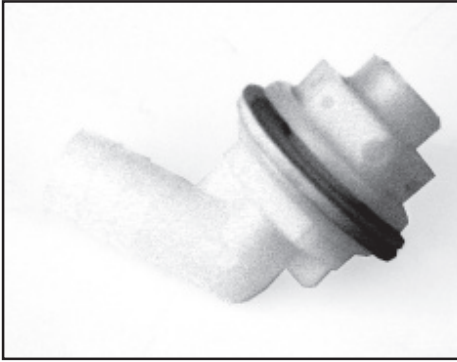
**Tube Connection:** Barb 16 mm, 5/8" ID

**Fitting Angle:** 70°

**Code No. 067990**



## Detergent Bulkhead Fittings



### Single Wall Tank Dry Detergent Fitting

**Material:** Polypropylene

**Bulkhead Hole:** 22 mm, 7/8"

**Tube Connection:** Barb 16mm, 5/8" ID tube

**Fitting Angle:** 70°

**Code No. 035542**

### Double Wall Tank Dry Detergent Fitting

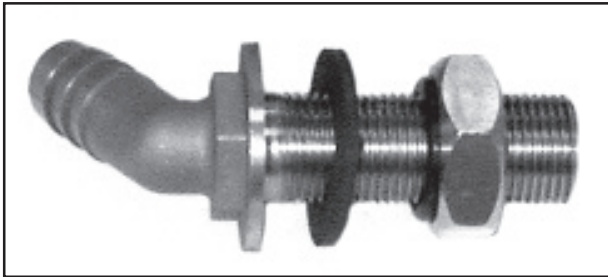
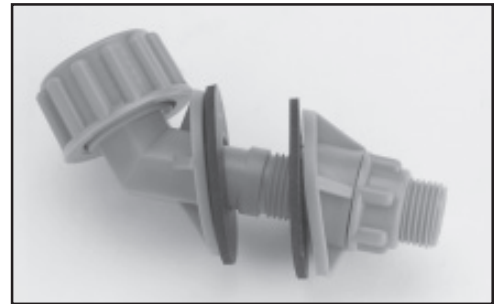
**Body Material:** Polypropylene

**Bulkhead Hole:** 22mm to 32mm (7/8" to 1-1/4"),  
depending on thickness of insulation on tank wall

**Tube Connection:** 23mm OD x 16mm ID

**Fitting Angle:** 70°

**Code No. 051177**



### Double Wall Tank Dry Detergent Fitting, Long Thread Kit

**Material:** 316 Stainless steel

**Bulkhead Hole:** 22 mm, 7/8"

**Tube Connection:** 16 mm, 5/8" ID

**Fitting Angle:** 70°

**Code No. 067989**

### Double Wall Tank Dry Detergent Fitting

**Material:** Polypropylene

**Bulkhead Hole:** 22mm, 7/8"

**Tube Connection:** Barb 16mm, 5/8" ID tube

**Fitting Angle:** 70°

**Code No. 067483**



#### Beta Technology, Inc

2841 Mission Street  
Santa Cruz • CA  
U.S.A. • 95060

TEL • 831 • 426 • 0882  
TEL • 800 • 858 • 2382  
FAX • 831 • 423 • 4573  
FAX • 800 • 221 • 8416

TEL (U.S. and Canada) • 800 • 468 • 4893  
TEL (outside U.S. and Canada) • 410 • 228 • 1292  
sales@beta-technology.com

Customer Service

Tech Support

#### Beta Technology, Inc

4 Finway, Dallow Road  
Luton LU1 1TR  
United Kingdom

Freephone • 0800 • 052 • 4726  
Tel • +44(0) • 1582 • 528600  
FAX • +44(0) • 1582 • 528111

Freephone • 0800 • 052 • 4726 • Tech Service  
VAT REG. NO. BG.354 - 09975 - 44  
europe.sales@beta-technology.com

Online Ordering: <http://www.beta-technology.com>

*Specifications subject to change without notice*

**Beta Technology is ISO9001 Certified**