

Instruction for Use of Summit Data Module with ManageNet Software

Installation and Operating Manual Addendum



INTRODUCTION

The Summit Data Module consists of a data logging PCB which can be used with Summit E and Summit XL. To determine if your dispenser is compatible with Data, look for **all three** of the following components on the dispenser's main PCB:

- A Molex pin connector (J13) labeled "PUMPS 7-8"
- A pin connector (J4) labeled "Data Module"
- A light-emitting diode (LED) labeled "D11"

See Figure 1 for the position of these components.

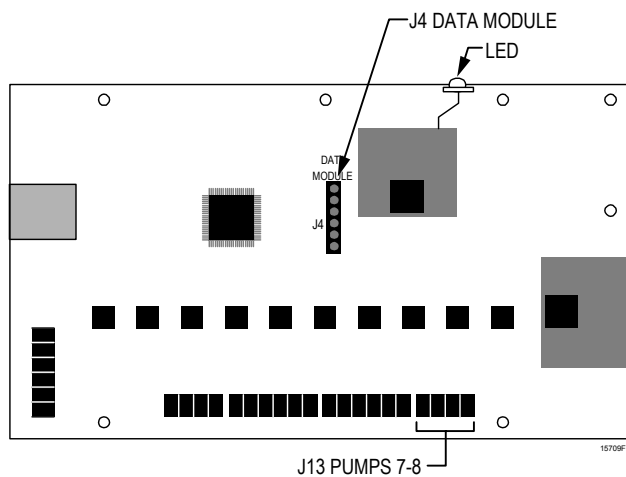


Figure 1. Dispenser main PCB, component locations

The Summit Data Module must be used in conjunction with ManageNet Software (sold separately).

For detailed instruction on the use of ManageNet software see the ManageNet Installation and Operation Manual. This document assumes the user has at least a rudimentary knowledge of ManageNet.

Instructions on the installation of the Summit Data Module come with each module. Install the Data Module according to these instructions.

GENERAL TIPS:

1. In order for a Data Module-equipped Summit E or XL to work with ManageNet software, it is necessary that it emulate an ILS dispenser.
2. When setting up Summit E and Summit XL with the Data Module, these dispensers do not appear in the ManageNet 3.11 pick list. Select **ILS** for each Summit E or Summit XL you plan to set up. A graphic of ILS will appear (see Figure 2).
3. When connecting a Data Module-equipped Summit E or Summit XL, you must set the clock and purge the memory prior to setup. Purging the memory will not affect the formulas. Information on setting the clock and purging memory is discussed later in this document.

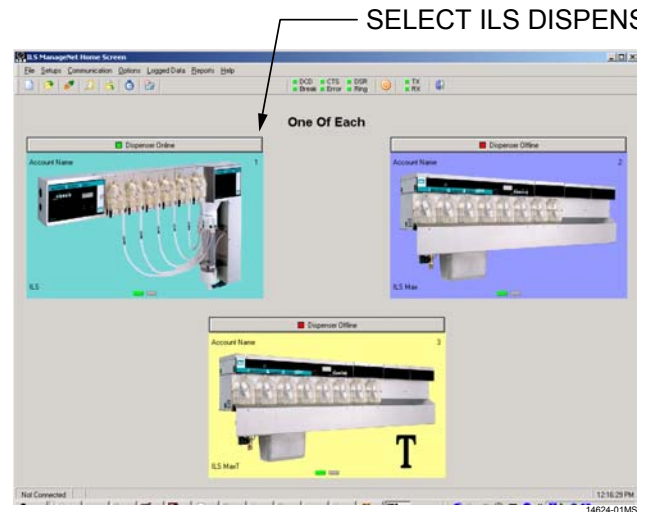


Figure 2. Data-capable Summit E and Summit XL will appear as ILS in ManageNet

4. Cloning of formulas must be done with the handheld programmer and can not be done via the ManageNet Software.

COMMUNICATION CAPABILITY

1. Communication between ManageNet and the Summit Data Module is one way (for the most part). ManageNet can retrieve and log data from the Data Module but cannot program the dispenser. **All programming of the dispenser must occur at the dispenser using the handheld programmer.**
2. ManageNet does have access to setups used exclusively for data-logging purposes. These setups can be viewed and/or set remotely using ManageNet. These setups are not accessible via the handheld programmer, and may not be copied to another XL Data by cloning.

Communication Summary

Setups related to the actual dispensing of chemicals may be made only via the handheld programmer, not by ManageNet. Setups related to data logging may be made only via ManageNet, and not by the handheld programmer.

VERSIONS OF MANAGENET SUPPORTED

Data Module-equipped Summit E and Summit XL may be used with either version 2 or version 3 of ManageNet. It was specifically tested with versions 2.1 and 3.11. This document refers to the use of Data Module-equipped Summit E and Summit XL with ManageNet version 3.1.1. Older versions may have slight differences in operation.

BASIC SETUP

The Data Module in a Summit E or Summit XL connects to a ManageNet-capable computer in the same manner as an ILS or an ILS Max. A two-wire cable (A and B, with an optional ground wire) is run from the J2 terminal block on the Data Module to an RS-232 to RS-485 converter or to a protocol converter. See Figure 3 for the location of the J2 terminal block on the Data Module.

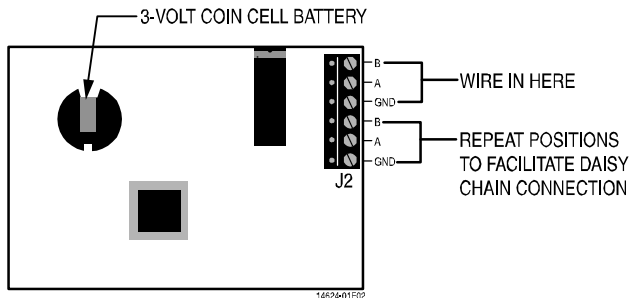


Figure 3. Data Module

As with the ILS and ILS Max, the Summit Data Module may be built into a dispenser network via a daisy chain arrangement. The connector positions (A, B & GND) repeat on the J2 terminal block to facilitate daisy chaining (see Figure 3). Consult the ManageNet installation and operating manual for further details on wiring multiple dispensers.

The network address of Data Module-equipped Summit Es and Summit XLs is set using the handheld programmer. When a Data Module is plugged in, a new setup screen appears, allowing the network ID to be set to any number between 01 and 99. Each dispenser in a network must have a unique address.

When using ManageNet to connect to or create an account containing Data Module-equipped Summit Es and Summit XLs, **ManageNet must be told that the Data Module-equipped dispenser is an ILS.** If ManageNet is told to poll the network to see which dispensers are present, it will recognize the Data Modules in the network as ILS dispensers.

Data Module-equipped Summit Es and Summit XLs will appear in the ManageNet main window as ILS dispensers (the graphic will be that of an ILS).

Important: It is difficult to tell the difference between Summit E Data, Summit XL Data and ILS from the ManageNet software screens without actually looking at the dispensers. Be sure to record the address you assign to each dispenser to avoid confusion.

SETTING THE CLOCK AND PURGING THE DATA LOGGING MEMORY

After selecting the dispenser's network address, use ManageNet to set the clock at the **Synchronize Clocks Window**. The chemical pump run time and squeeze tube time in service dates will be set to the current clock time and date, so the clock time should be checked and adjusted if necessary **prior to performing a purge**.

The Purge Screen

The purge screen allows the logged data to be purged (erased). It is important to purge a Data Module before setup to ensure that no old data is present. *This purge has no effect on the*

formulas; it clears the data logged in ManageNet to allow the program to start logging data with empty files. This helps avoid confusion and erroneous reporting.

To perform a purge, go to the **"Purge?"** screen (see Figure 4a); press and hold the 'action' button until a flashing arrow appears to signify that the purge is in progress.

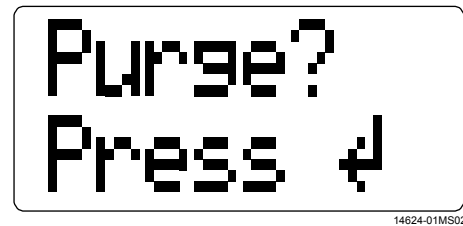


Figure 4a. Purge Screen



Figure 4b. Purge in progress

The purge takes 30 to 60 seconds to complete, at which time the flashing arrow will disappear.

After a purge, the logged data memory will be blank, and all of the setups that affect that Data Module will be gone. The clock is not affected by a purge. The setups may be restored after the purge by resending them from ManageNet.

BACKUP BATTERY

The Data Module has a 3 volt coin cell battery (see Figure 3) to run the internal clock (BR2330 Panasonic).

Under normal circumstances, this battery should last several years. A bad battery will cause the clock setting to revert to the default value if power to the unit is lost. Cycle records will show incorrect dates and times after the power loss. If the battery ever needs replacing, you can slip it out and slip a new battery into the battery holder (code #058942). When you replace the clock battery, you must reset the clock. Set the clock from the **Synchronize Clocks Window** as described under **SETTING THE CLOCK AND PURGING THE DATA LOGGING MEMORY**. Following this, you should perform a logged data purge to properly clear any corrupted data.

MANAGENET SETUPS, WINDOW BY WINDOW

Account Setup Window

All the settings adjusted in this window will be recognized and accepted by the Data Module except the metric/US units setting. The Metric/US units setting must be done at the dispenser using the handheld programmer as well as in the General Account Setup Window. Be sure the same units (metric or US) are used in both areas.

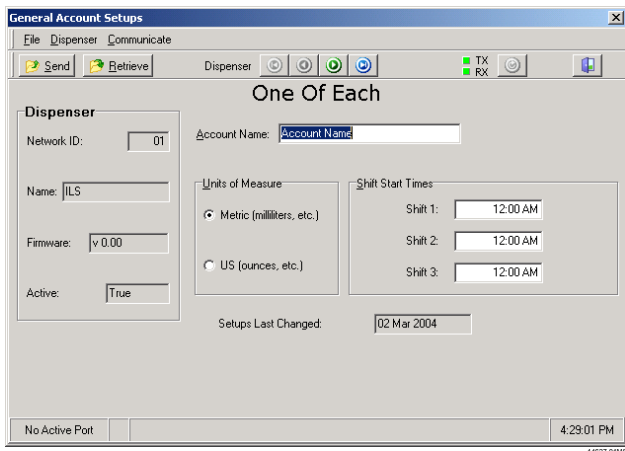


Figure 6. General Account Setup Window

Chemical Supply Setup Window

- The Dilution Factor, Minimum Water Temperature, and Force Slow Speed settings will be ignored by the Data Module, and default values will be returned when read.
- The Pump Speed Calibrations from this window will not be accepted by the Data Module. A value of zero will be displayed. Calibration of the pumps on Data Module-equipped Summit E and Summit XL must be done using the handheld programmer.

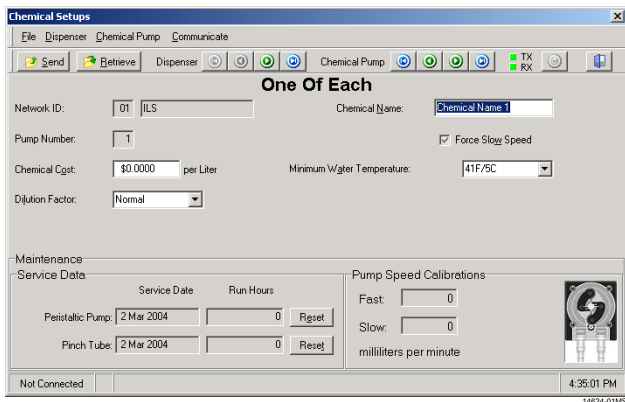


Figure 7. Chemical Supply Setup Window

Other settings on this screen relate to data logging, and will be honored by the Data Module.

Washer / Transport Pump Setup Window

Only the Washer Name setting from this window will be recognized by the Data Module. All other settings modified in the screen will be ignored. The Transport Pump Service Date and Run Hours are fixed, and can not be changed.

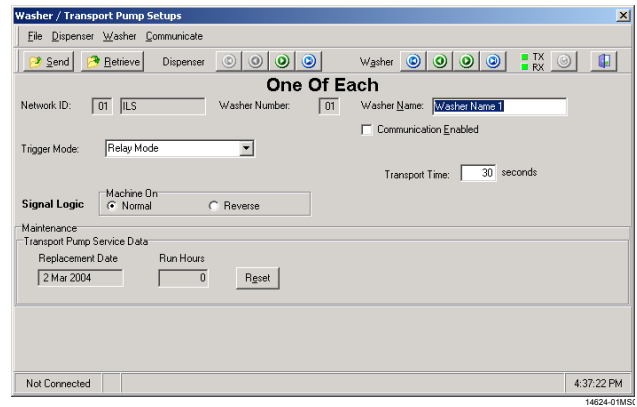


Figure 8. Washer/Transport Pump Settings

Load Classification Setups Window

All the settings in this window will be recorded and used by the Data Module. However, special consideration must be given to the classification names. The classification names are used for reporting only and will not appear in the Formula Name screens on the handheld programmer. **Classification names must be programmed in ManageNet and formula names must be programmed at the dispenser using the handheld programmer.** Mismatched names could cause confusion in the washer cycle log, so the person doing the setup must ensure that the two sets of names agree.



*Data Module-equipped Summit E and Summit XL have a maximum of 16 formulas; the **Load Classification Window** in ManageNet allows you to input up to 30. Therefore, only formulas 1 through 16 will be used and classifications 17 through 30 will not be logged. Unlike an ILS, the Data Module will never log an unidentified cycle, so there is no need to enter the run time and weight for unidentified cycles into classification 30.*

Trigger Setup Window

None of the settings made via this screen apply to data logging so all will be ignored by the Data Module.

Synchronize Clocks Window

This window works just as with an ILS, setting the date and time used by the battery-backed clock on the Data Module.

Backup (Retrieve All) and Restore (Send All)

These two operations work with Data Module-equipped Summit E and Summit XL as they do with ILS. All setup information can be sent or retrieved in a single operation.

The Data Module will ignore those settings that don't apply to it such as information intended for a second washer (a feature supported by ILS but not supported by Summit E or Summit XL). When ManageNet retrieves setups information from the Data Module, the Data Module will send back default data for those settings it doesn't support.

Retrieve RAM Image and Send RAM Image

These two operations do not work with Data Module-equipped Summit E and Summit XL. Attempting to use them will cause dispenser communication errors.

For more information on the operation of ManageNet see the ManageNet Installation and Operation Manual.



Beta Technology
2841 Mission Street
Santa Cruz • CA
U.S.A. • 95060

TEL • 831 • 426 • 0882
TEL • 800 • 858 • 2382
FAX • 831 • 423 • 4573
FAX • 800 • 221 • 8416

Customer Service

TEL (U.S. and Canada) • 800 • 468 • 4893
TEL (outside U.S. and Canada) • 01 • 410 • 228 • 1292

Tech Support

sales@beta-technology.com
<http://www.beta-technology.com>

Beta Technology is ISO 9001 Certified