

MESA Sequence Mode Laundry Dispenser with 230 ml/min Pumps



Profitably Automates Small Washers with Just the Drain Signal

Mesa's low cost and quick installation make small OPL accounts profitable. Using just the drain signal as a trigger allows you to automate a broader range of washers, *increasing your sales potential*. The low-product alarm *eliminates lost chemical sales* due to empty buckets.

Mesa saves you money. It is *very competitively priced*, and its simple screen prompts *slash installation time*. SnapHead™ pump cartridges enable quick pump tube replacement, *reducing maintenance requirements and increasing safety*. Best of all, Mesa is incredibly easy to use, *minimizing training requirements*.

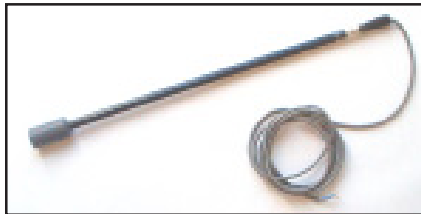
Mesa is intended for washers up to 10 kilos which require 2 - 3 chemicals and up to 6 formulas. For domestic style washers, we recommend Alpine. For larger washers, use Summit.

PAYS FOR ITSELF



- Cost effective for small accounts
- Minimal inventory requirements
- Reduces installation time
- Reduces training time
- Expands your potential customer base
- Safety pays

SPECIAL FEATURES



LOW-LEVEL ALARM PROBE

Ensure wash quality and chemical sales with the optional alarm probe.

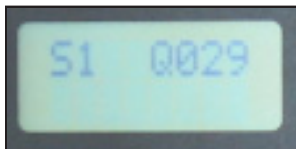


FAST, SIMPLE WIRING

Most dispensers require multiple triggers, but not Mesa. Just attach wires to the drain valve and a constant power source, and you're done. You'll never have false triggering, or waste hours troubleshooting trigger sources again!

LOAD COUNT DATA

Mesa keeps track of load counts for each wash load type. Many customers value this data for their laundry operations management. In a cost-guarantee account, where billing is based on headcount rather than the amount of chemical used, this data can be compared to chemical usage if product theft is suspected.



PASSWORD SECURITY

Setups are protected by a password, so no one without the password can alter data or pump times. The password is not required to prime the pumps, so laundry room workers can readily reprime chemical tube lines when replacing chemical drums.



SPECIFICATIONS

SIZE

THREE-PRODUCT ENCLOSURE

5.75H x 15.25W x 5.5D (inches)

14.61H x 40.96W x 13.97D (centimeters)

TWO-PRODUCT ENCLOSURE

5.75H x 11.50W x 5.5D (inches)

14.61H x 31.12W x 13.97D (centimeters)

WEIGHT

4.38 lbs (2 kg) for 3-pump system.

CABINET MATERIAL

ABS – Flame Retardant

IP54 Water-Resistant

MOUNTING

Wall mounted with stainless steel bracket or mounting tabs.

OPERATING CONDITIONS

AMBIENT OPERATING TEMPERATURE

36 to 104° Fahrenheit (2 to 40° Celsius)

ELECTRICAL POWER CONFIGURATIONS

100-240VAC, 50-60 Hz

FUSE

Mesa has no user-serviceable fuse. Protection is provided by the power supply.

COMPONENTS

PUMPS

Peristaltic, dual roller, self-priming and self-checking.

TUBE

Flex, 8 oz, 230 ml per minute

TRIGGERS

Two optically coupled (24-240 VAC)

CURRENT

0.42 amp max (at 240 VAC)

SONIC LOW LEVEL ALARM

Emits 80db at 4 feet (1.22 meters)

HYDRAULIC PERFORMANCE

Maximum Vacuum 8 in (200 mm) of mercury

Maximum Pressure 1.4 bar (20 psi)

APPROVALS

CE approved, CSA

Ordering Information

Mesa comes complete with mounting screws, but the mounting bracket, trigger wire, power cord and suction/transport tubing are sold separately.

Model	Number of Pumps	Pump Tubes	Code No.
Mesa	2	High-flow Flex with 3/8" (10 mm) barb fittings	1201162
	3	High-flow Flex with 3/8" (10 mm) barb fittings	1201161

144721C

ACCESSORIES

Item #	Description
091518	Low level drum lance (alarm probe)
041754	8 foot, 110V power cord
032121	PG7 1/4" power cord strain relief
069188	Stainless steel mounting bracket
090369	PG16 3/4" power cord strain relief



Beta Technology
2841 Mission Street
Santa Cruz • CA
U.S.A. • 95060

TEL • 831 • 426 • 0882
TEL • 800 • 858 • 2382
FAX • 831 • 423 • 4573
FAX • 800 • 221 • 8916

TEL (U.S. and Canada) • 800 • 468 • 4893
TEL (outside U.S. and Canada) • 410 • 228 • 1292
sales@betatechnology.com

Customer Service:

Beta Technology
4 Finway, Dallow Road
Luton LU1 1TR
United Kingdom

Freephone • 0800 • 052 • 4726
Tel • +44(0) • 1582 • 528600
Fax • +44(0) • 1582 • 528111
Freephone • 0800 • 052 • 4726
VAT REG. NO. BG.354 - 09375 - 44
europe.sales@betatechnology.com

Tech Support
Online Ordering: <http://www.beta-technology.com>

Beta Technology is ISO9001 Certified